



# SCRUBBER 50

**AI-Powered Robotic Floor Scrubber**  
for Medium to Large Spaces

(Certified to **IEC 63327:2021** Standards)



# Key Features

## Versatile Cleaning

---

### 3-in-1 Solution

Integrates scrubbing, sweeping, and dust mopping in a single solution.

### 2 Main Brush Options

Choose between a disc brush or a roller brush to suit your specific cleaning requirements.

## AI-Powered Perception

---

### Spot Cleaning Mode

Proactively detects and cleans waste using RGB camera and AI algorithms, bringing up to 400% efficiency improvement.

### Smart Obstacle Avoidance

Recognizes passengers and obstacles and makes advanced behavior decisions according to the types and characteristics of obstacles.

## Sustainability

---

### Water Recycling

Features a built-in multi-stage filtration system that recycles and reuses water, reducing freshwater consumption by approximately 80%.

### Energy Efficient

Delivers up to 10 hours of runtime in the Spot Cleaning mode, reducing energy consumption by approximately 75%.

## Effortless Maintenance

---

### Quick-Release Cleaning Components

The squeegee assembly and filter components feature a quick-release design for tool-free disassembly and reassembly within seconds.

### Docking Stations

Optional workstation for self-docking power charging and water management.

## Applicable Flooring Types

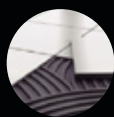
---



Natural Stone



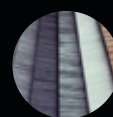
Artificial Stone



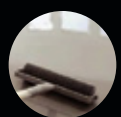
Ceramic



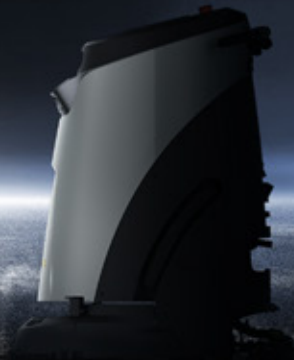
Concrete



PVC



Epoxy



## Specification \*

|   | Disc Brush   | Roller Brush   |
|---|--|--|
| Net Weight                              | 149 kg   328.5 lb  | 128 kg   282.2 lb  |
| Cleaning Width                          | 460 mm   18.1 in   | 406 mm   16 in<br>With side brushes:<br>780 mm   30.7 in |
| Edge Cleaning Capability                | 40 mm   1.6 in   | 40 mm   1.6 in<br>With side brushes:<br>0 mm   0 in      |
| Brush Pressure                          | 25 kg   55 lb  | 18 kg   39.7 lb  |
| Trash Tray Capacity                     |  | 2×0.6 L   2×0.16 gal                                     |
| Max. Runtime                            | Scrubbing 3 h<br>Dust Mopping 8 h                                  | Scrubbing 3 h<br>Dust Mopping 6 h                        |
| Max. Scrubbing Efficiency (Theoretical) | 1,987 m <sup>2</sup> /h   21,388 ft <sup>2</sup> /h                | 1,754 m <sup>2</sup> /h   18,880 ft <sup>2</sup> /h      |
| Practical Cleaning Efficiency           | 500-1,300 m <sup>2</sup> /h   5,382-13,993 ft <sup>2</sup> /h      |  |
| Dimension (L×W×H)                       | 810×700×1,070 mm   31.9×27×42.1 in                                 |  |
| Charging Time                           | 2 h  |  |
| Clean/Waste Water Tank                  | 30L / 24 L   7.9 gal / 6.3 gal                                     |  |
| Gradeability                            | 4.6°   |  |
| Min. Pass Width                         | 800 mm   31.5 in   |  |
| Min. U-turn Width                       | 1,100 mm   43.3 in   |  |
| Max. Cleaning Speed                     | 1.2 m/s   2.7 mph  |  |
| Sensor System                           | 2D LiDAR, 3D Depth Camera, RGB Camera, Anti-Collision Sensor, etc. |  |

\*Note : [1]The specifications are derived from Gausium lab test results; actual performance data may vary in specific applications.  
[2]Alternative configurations compliant with IEC 63327 are available upon request. Please note that the corresponding specifications may vary depending on the chosen configuration.

Award-Winning **Excellence**  
Best-Selling Choice

